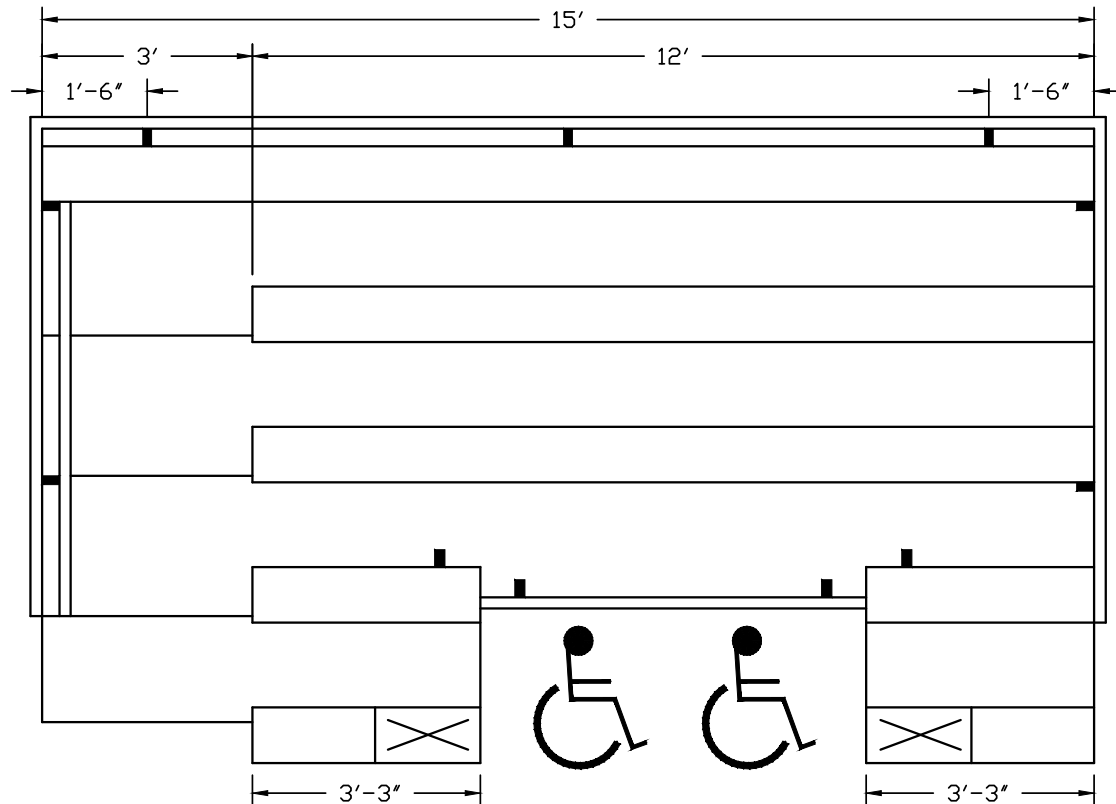


Designed for safety. Built for fun.



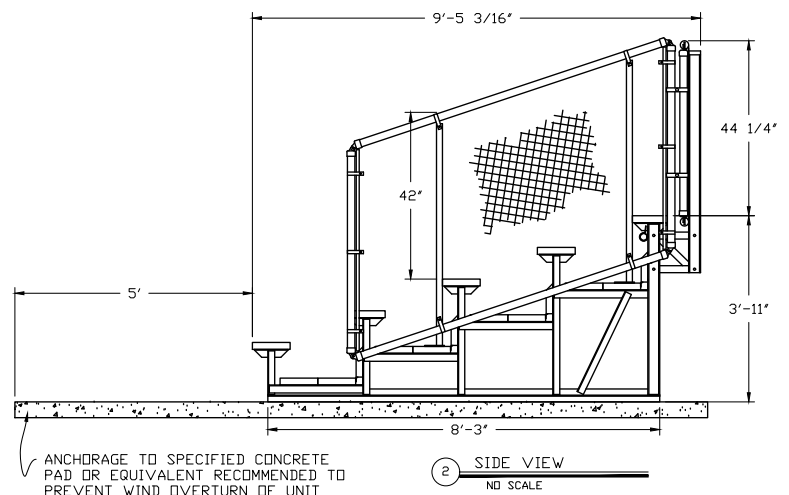
CODE COMPLIANCE - IBC & ADA

1 PLAN VIEW
NO SCALE

GENERAL SPECIFICATIONS

- ALL ALUMINUM UNDERSTRUCTURE
- RISE - 8"
- RUN - 24"
- TREATED WOOD GROUND SILLS
- 2x10 ANODIZED SEAT PLANK
- DOUBLE 2x10 FOOTBOARDS - ALL ROWS
- RISER ENCLOSURE - ALL ROWS
- RISER CLOSURE RAIL - TOP ROW ONLY
- (1) 3' AISLE, ENCLOSED W/HAND RAILS
- NON-SLIP COLORED NOSE MARKINGS
- (1) 2X HDPC NOTCH
- CHAIN LINK FENCE SECURITY - (4" BALL DOWN TO ROW 2
- RECOMMEND CONCRETE PAD FOR ANCHORAGE (BY OTHERS)

NOTE:
PLEASE SPECIFY WHICH SIDE IS
PREFERRED FOR AISLE LOCATION.



NET SEATING CAPACITY - 32
+ HDPC - 2
+ HDPC COMPANION - 2
TOTAL - 36 SPECTATORS

The Manufacturer warrants its bleacher products to be free from defects in materials and workmanship for a period of five (5) years beginning with the date the product is completed at the job site. Product installation can be performed by factory trained personnel or by the customer personnel following the detailed assembly instructions of the manufacturer. This warranty excludes all other defects resulting from abnormal use or abuse, accidental damage or any occurrences beyond the manufacturers control.

15' - 5 Level Bleacher w/ 2 HDPC